



MONUMENTATION:

- Found 5/8" Iron Pin ("Chris Gephart PLS#3292" - unless otherwise noted)
- Set 5/8"x30" Iron Pin (w/ Cop - "Chris Gephart PLS#3292")
- ⊙ Set 5/8"x30" Iron Witness Pin (w/ Cop - "Witness 3292")
- ▲ Set MAG Nail (w/ ID Tag - "PLS#3292")
- ### Property Address

Basis of Bearing: State Plane NAD83 (2011)
 SCALE: 1" = 50'

- Indicates Landscape Easement reserved by Gerdes & Flesch Construction, Inc.

A-1168

Easement Line Table

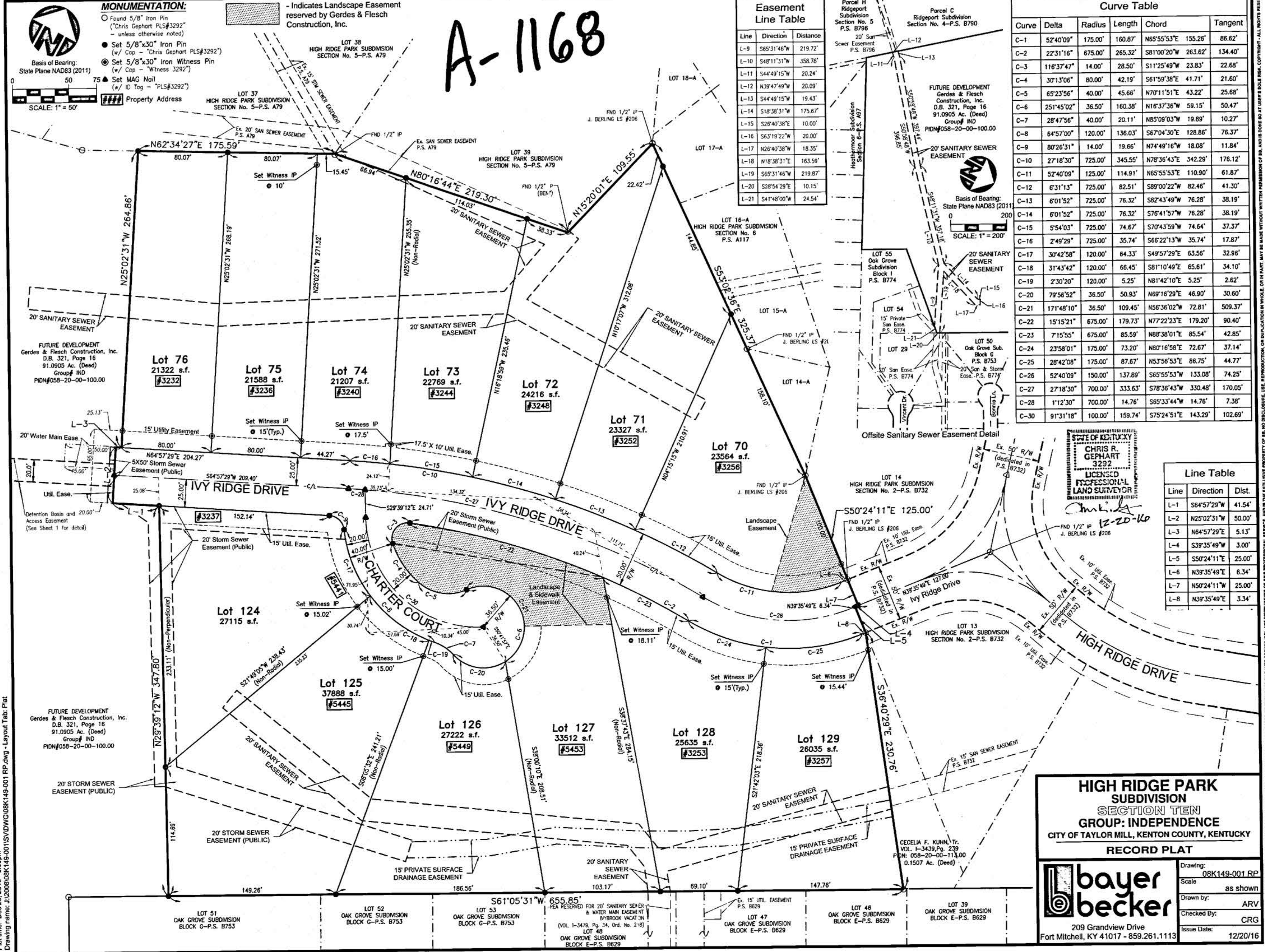
Line	Direction	Distance
L-9	S65°31'46"W	219.72'
L-10	S48°11'31"W	358.78'
L-11	S44°49'15"W	20.24'
L-12	N39°47'49"W	20.09'
L-13	S44°49'15"W	19.43'
L-14	S18°38'31"W	175.67'
L-15	S26°40'38"E	10.00'
L-16	S63°19'22"W	20.00'
L-17	N26°40'38"W	18.35'
L-18	N18°38'31"E	163.59'
L-19	S65°31'46"W	219.87'
L-20	S28°54'29"E	10.15'
L-21	S41°48'00"W	24.54'

Curve Table

Curve	Delta	Radius	Length	Chord	Tangent
C-1	52°40'09"	175.00'	160.87'	N65°55'53"E 155.25'	86.62'
C-2	22°31'16"	675.00'	265.32'	S81°00'20"W 263.62'	134.40'
C-3	116°37'47"	14.00'	28.50'	S11°25'49"W 23.83'	22.68'
C-4	30°13'06"	80.00'	42.19'	S61°59'38"E 41.71'	21.60'
C-5	65°23'56"	40.00'	45.66'	N70°11'51"E 43.22'	25.68'
C-6	25°14'50"	36.50'	160.38'	N16°37'36"W 58.15'	50.47'
C-7	28°47'56"	40.00'	20.11'	N85°09'03"W 19.89'	10.27'
C-8	64°57'00"	120.00'	136.03'	S67°04'30"E 128.86'	76.37'
C-9	80°26'31"	14.00'	19.66'	N74°49'16"W 18.08'	11.84'
C-10	27°18'30"	725.00'	345.55'	N78°36'43"E 342.29'	176.12'
C-11	52°40'09"	125.00'	114.91'	N65°55'53"E 110.90'	61.87'
C-12	6°31'13"	725.00'	82.51'	S89°00'22"W 82.46'	41.30'
C-13	6°01'52"	725.00'	76.32'	S82°43'49"W 76.28'	38.19'
C-14	6°01'52"	725.00'	76.32'	S76°41'57"W 76.28'	38.19'
C-15	5°54'03"	725.00'	74.67'	S70°43'59"W 74.64'	37.37'
C-16	2°49'29"	725.00'	35.74'	S66°22'13"W 35.74'	17.87'
C-17	30°42'58"	120.00'	64.33'	S49°57'29"E 63.56'	32.96'
C-18	31°43'42"	120.00'	66.45'	S81°10'49"E 65.61'	34.10'
C-19	2°30'20"	120.00'	5.25'	N81°42'10"E 5.25'	2.62'
C-20	79°56'52"	36.50'	50.93'	N69°16'29"E 46.90'	30.60'
C-21	171°48'10"	36.50'	109.45'	N58°36'02"W 72.81'	509.37'
C-22	15°15'21"	675.00'	179.73'	N77°22'23"E 179.20'	90.40'
C-23	7°15'55"	675.00'	85.59'	N88°38'01"E 85.54'	42.85'
C-24	23°58'01"	175.00'	73.20'	N80°16'58"E 72.67'	37.14'
C-25	28°42'08"	175.00'	87.67'	N53°56'53"E 86.75'	44.77'
C-26	52°40'09"	150.00'	137.89'	S65°55'53"W 133.08'	74.25'
C-27	27°18'30"	700.00'	333.63'	S78°36'43"W 330.48'	170.05'
C-28	1°12'30"	700.00'	14.76'	S65°33'44"W 14.76'	7.38'
C-30	91°31'18"	100.00'	159.74'	S75°24'51"E 143.29'	102.69'

Line Table

Line	Direction	Dist.
L-1	S64°57'29"W	41.54'
L-2	N25°02'31"W	50.00'
L-3	N64°57'29"E	5.13'
L-4	S39°35'49"W	3.00'
L-5	S50°24'11"E	25.00'
L-6	N39°35'49"E	6.34'
L-7	N50°24'11"W	25.00'
L-8	N39°35'49"E	3.34'



HIGH RIDGE PARK SUBDIVISION SECTION TEN GROUP: INDEPENDENCE CITY OF TAYLOR MILL, KENTON COUNTY, KENTUCKY RECORD PLAT

bayer becker
 209 Grandview Drive
 Fort Mitchell, KY 41017 - 859.261.1113

Drawing: 08K149-001 RP
 Scale: as shown
 Drawn by: ARV
 Checked By: CRG
 Issue Date: 12/20/16

Plot time: Dec 20, 2016 - 3:35pm
 Drawing name: J:\2008\08K149-001\SV\DWG\08K149-001.RP.dwg - Layout Tab: Plat

THIS DOCUMENT AND ALL RELATED DETAIL DRAWINGS, SPECIFICATIONS, AND ELECTRONIC MEDIA PREPARED OR PUBLISHED BY BAYER BECKER (BB), ARE INSTRUMENTS OF PROFESSIONAL SERVICE, AND IN THE EXCLUSIVE PROPERTY OF BB. NO REPRODUCTION OR DUPLICATION IN WHOLE OR IN PART, MAY BE MADE WITHOUT WRITTEN PERMISSION OF BB, AND IS SOLELY AT USER'S RISK. COPYRIGHT - ALL RIGHTS RESERVED.